



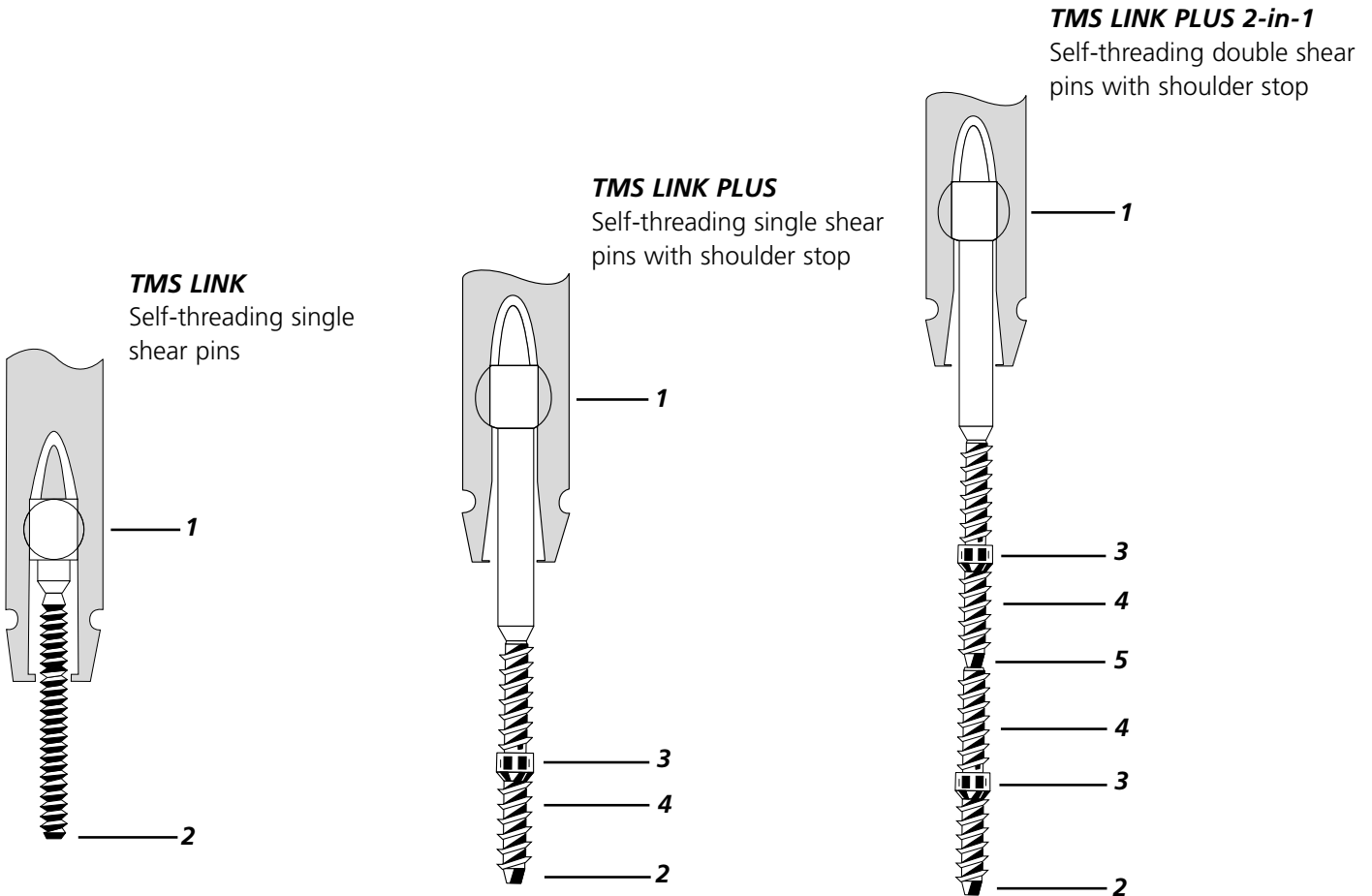
**TMS LINK®/TMS LINK PLUS®**

Retention Pins

*For permanent retention in the  
most demanding indications*

**TMS LINK® and TMS LINK PLUS®**  
**It's the details that make the difference.**

TMS pins are easy to use, self-threading retention pins that provide a reliable link between restorative filling material and dentin. While conventional TMS pins were conceived for manual insertion, TMS LINK and TMS LINK PLUS pins can also be mechanically installed. The well thought out construction of TMS LINK and TMS LINK PLUS is the result of decades of experience and an uncompromising effort to meet your restorative needs.



**1 Ball joint link to shank**  
smooth self-alignment of the pin during insertion and consistent shearing

**2 Tapered pin end**  
leads pin into channel for easy insertion

**3 Shoulder stop**  
stops the pin coronally reducing apical stress

**4 Wide buttress thread design**  
smooth insertion together with optimum retention

**5 Defined shear points**  
convenient and time-saving pin placement

**Your Choice between Titanium Alloy or Gold-Plated Stainless Steel**

**Titanium Alloy**

- Nickel-free alloy, completely biocompatible
- Twice the yield strength and tensile strength of pure titanium
- Greater fatigue resistance than pure titanium
- Same price as conventional gold plated stainless steel pins

**Gold-Plated Stainless Steel**

- Gold color reduces the shadowing thru composite restorations
- Convenient and simple pin replacement

**TMS LINK® and TMS LINK PLUS®**  
**For various indications in anterior and posterior teeth.**

With the self-threading TMS LINK and TMS LINK PLUS retention pins, you create a lasting bond between restorative filling material and dentin in vital and non-vital teeth.



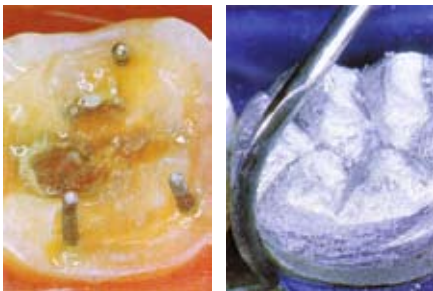
Pin-retained composite restoration

**Indications**

*Anchoring of class III and IV composite restorations (Synergy®, Miris®)*

**Pin Sizes**

Minuta	0.350 mm
Minikin	0.425 mm
Minim	0.525 mm



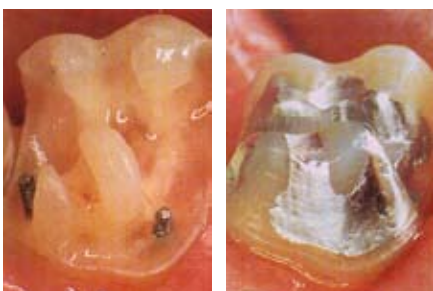
Pin-retained amalgam restoration

**Indications**

*Anchoring of class I and II amalgam restorations*

**Pin Sizes**

Minikin	0.425 mm
Minim	0.525 mm
Regular	0.675 mm



Pin-retained amalgam build-up

**Indications**

*Retention of build-ups fabricated with restorative filling materials*

**Pin Sizes**

Minikin	0.425 mm
Minim	0.525 mm
Regular	0.675 mm

In vital teeth

Minikin	0.425 mm
Minim	0.525 mm

In non-vital teeth

anterior  
posterior

combined with an endodontic post (ParaPost®, XP, XH, XT, Tenax)

**Comprehensive**  
**Four pin sizes each with a corresponding KODEX drill.**

You will find the TMS LINK and TMS LINK PLUS concept uncompromising, simple, and reliable in handling. The products are clearly presented: thanks to our color-coded system, the appropriate pin can be instantly identified. The pins are also attached to the shank with a ball joint for a smooth self-alignment to reduce the risk of premature shearing. The KODEX® drills, which are also color-coded, guarantee optimum preparation of the pin channel. It's a system that will convince you!

# Order information

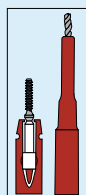
## Description ▶

### Diameter of the pin ▼

Minuta  
0.350 mm/.0135"

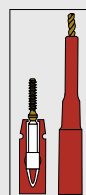
## Alpha-Beta-Titanium

## Gold-Plated Stainless Steel



**TMS LINK® Minikin Titanium**  
pin depth 1.5 mm  
head length 1.5 mm  
**L811**  
20 Self-Threading Single Shear Pins  
Universal Hand Driver  
KODEX® Drill K91 (0.425 × 1.5)

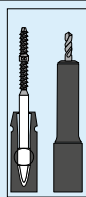
**L812 Bulk Kit**  
50 Self-Threading Single Shear Pins



**TMS LINK® Minikin**  
pin depth 1.5 mm  
head length 1.5 mm  
**L511**  
20 Self-Threading Single Shear Pins  
Universal Hand Driver  
KODEX® Drill K91 (0.425 × 1.5)

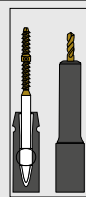
**L502 Bulk Kit**  
50 Self-Threading Single Shear Pins

Minikin  
0.425 mm/.017"



**TMS LINK PLUS® Minim Titanium**  
pin depth 2.0 mm  
head length 3.0 mm  
**EL821-24**  
24 Self-Threading Single Shear Pins  
Universal Hand Driver  
KODEX® Drill K92 (0.525 × 2.0)

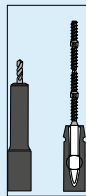
**L822-60 Bulk Kit**  
60 Self-Threading Single Shear Pins



**TMS LINK PLUS® Minim**  
pin depth 2.0 mm  
head length 3.0 mm  
**EL721-24**  
24 Self-Threading Single Shear Pins  
Universal Hand Driver  
KODEX® Drill K92 (0.525 × 2.0)

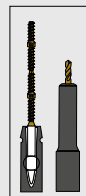
**EL722-60 Bulk Kit**  
60 Self-Threading Single Shear Pins

Minim  
0.525 mm/.021"



**TMS LINK PLUS® Minim Titanium (2/1)**  
pin depth 2.0 mm  
head length 2.0 mm  
**EL841-24**  
24 Self-Threading Double Shear Pins  
Universal Hand Driver  
2 KODEX® Drill K92 (0.525 × 2.0)

**EL842-60 Bulk Kit**  
60 Self-Threading Double Shear Pins

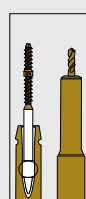


**TMS LINK PLUS® Minim (2/1)**  
pin depth 2.0 mm  
head length 2.0 mm  
**EL731-24**  
24 Self-Threading Double Shear Pins  
Universal Hand Driver  
2 KODEX® Drill K92 (0.525 × 2.0)

**EL732-60 Bulk Kit**  
60 Self-Threading Double Shear Pins

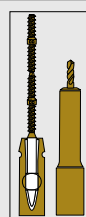
Note: Bulk kits contain pins only.  
Drills must be ordered separately.

Regular  
0.675 mm/.027"



**TMS LINK PLUS® Regular**  
pin depth 2.0 mm  
head length 3.0 mm  
**EL741-24**  
24 Self-Threading Single Shear Pins  
Universal Hand Driver  
KODEX® Drill K96 (0.675 × 2.0)

**EL742-60 Bulk Kit**  
60 Self-Threading Single Shear Pins



**TMS LINK PLUS® Regular (2/1)**  
pin depth 2.0 mm  
head length 2.0 mm  
**EL751-24**  
24 Self-Threading Double Shear Pins  
Universal Hand Driver  
2 KODEX® Drill K96 (0.675 × 2.0)

**EL752-60 Bulk Kit**  
60 Self-Threading Double Shear Pins

## KODEX® Drills (6 pcs.)

**K-89** TMS Minuta (0.350x1.3mm) with depth-limitation pink  
**K-90** TMS Minikin (0.425x1.5mm) with depth-limitation red  
**K-91** TMS Minikin (0.425x1.5mm) long shank, with depth-limitation red  
**K-92** TMS Minim (0.525x2.0mm) with depth-limitation silver

**K-93\*** for TMS Minim (0.525x4.0mm) without depth-limitation silver  
**K-96** for TMS Regular (0.675x2.0mm) with depth-limitation gold  
**K-97\*** for TMS Regular (0.675x5.0mm) without depth-limitation gold

\* Burs without depth-limitation for special indications

www.coltenewhaledent.com  
© 2008 Coltène/Whaledent

**Coltène/Whaledent Ltd.**  
The President Suite-A  
Kendal House, Burgess Hill  
Victoria Way  
West Sussex, RH15 9NF/U.K.  
Tel. +44 (0)1444 235486  
Fax +44 (0)1444 870640  
hq@coltenewhaledent.co.uk

**Coltène/Whaledent AG**  
Feldwiesenstrasse 20  
9450 Altstätten/Switzerland  
Tel. +41 (0)71 757 53 00  
Fax +41 (0)71 757 53 01  
office@coltenewhaledent.ch

**Coltène/Whaledent Inc.**  
235 Ascot Parkway  
Cuyahoga Falls, Ohio 44223/USA  
Tel. +1 330 916 8800  
Fax +1 330 916 7077  
productinfo@coltenewhaledent.com

**coltène  
whaledent**